



Installing and Upgrading HLMSW v8 Client Software

The installation and upgrade process for HLMSW is quite simple but does require administrative permissions on most computer systems.

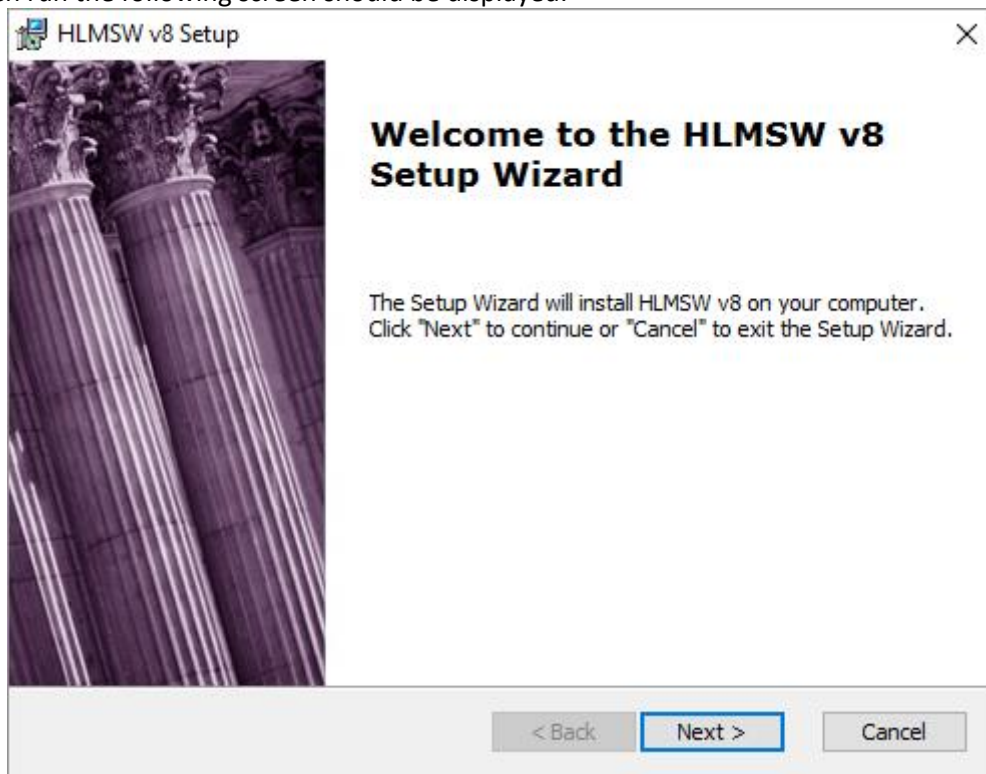
The procedure for both an upgrade or installation is the same, first you need to locate the **HLMSWv8Setup.msi** program which is usually located in the **Updates** folder in your shared HLMSW repository on the network. You should always use this version of the file for installation and updates to make sure that all users on the network use identical software.

If for some reason you cannot locate this program, you can download the latest version of HLMSW from here:

<http://www.hlmsw.com/HLMSW80Updates/HLMSWv8Setup.msi>

Note: It is important that all users have the same HLMSW version, and later versions may not work with your HLMSW unless your system has been updated using the tools in the HLMSW Admin program.

When run the following screen should be displayed:



You will be then prompted for some information, but the default selections are usually the best (and so just press the *Next* button and *Finish* when the installation is complete).

BTM Innovation Pty Ltd

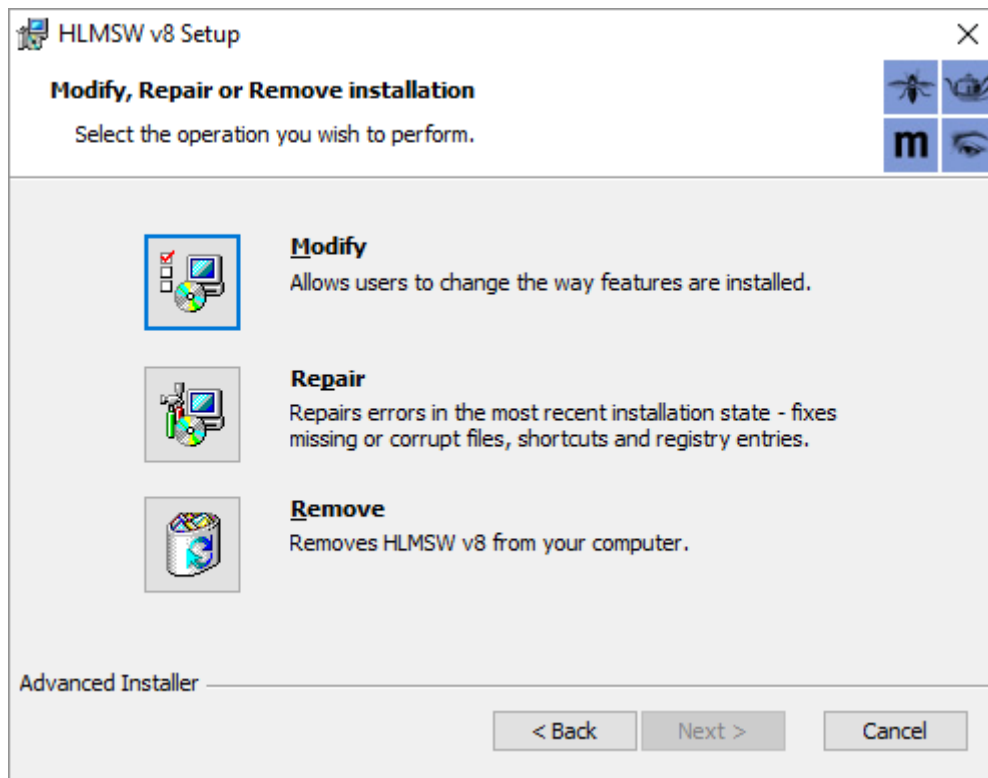
ACN 090 385 176 • ABN 71 090 385 176

60 Malurus Ave • Lockleys • SOUTH AUSTRALIA • 5250

Tel +61 (0)8 7127 0370 • Mob +61 (0)409 286 400

info@btmi.com.au • <http://www.btmi.com.au>

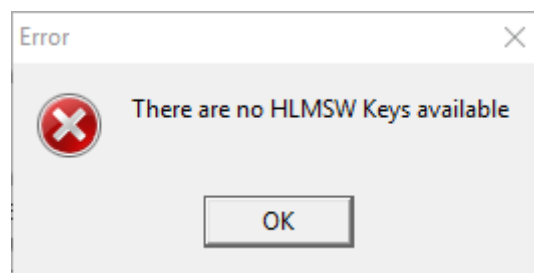
Note: if you see this screen



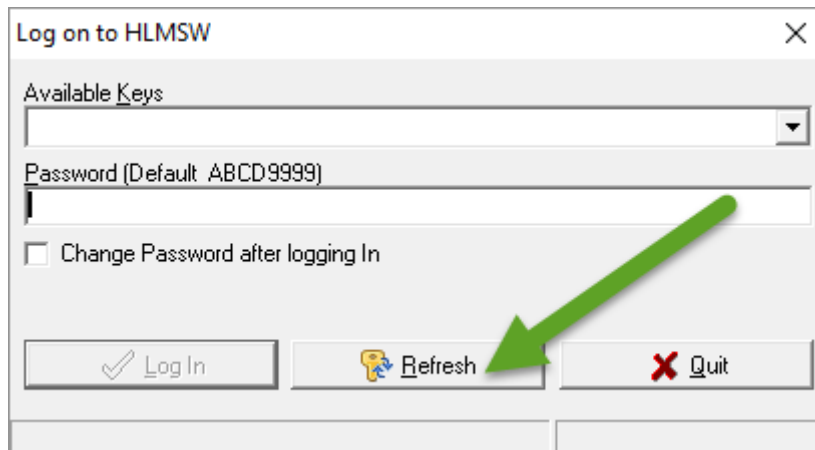
You **already** have the current version of HLMSW installed. If you do not need to modify or repair the installation, you can Cancel out of the routine now.

For updates, you should not be ready to resume HLMSW.

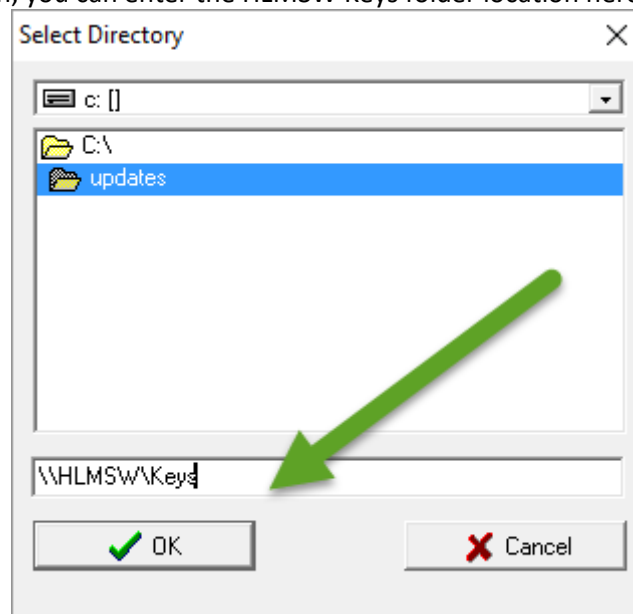
For new installations, you may receive this prompt when the system starts:



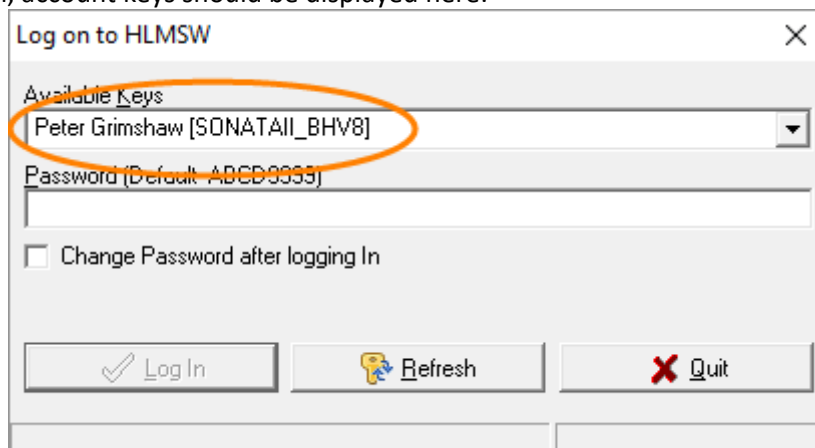
If so, you must define the location of the common HLMSW Keys folder program which is usually located in the **Keys** folder in your shared HLMSW repository on the network. To do this, click on the *Refresh* button in the HLMSW Log on screen:



At this screen, you can enter the HLMSW Keys folder location here and press OK:



If successful, account keys should be displayed here:



You may then select the correct account and the password (which is **ABCD9999** for new accounts) and you should be able to enter HLMSW.

26 August 2016