



# HLMSW Build 7.0.1 Installation Notes

---


## Introduction

This build introduces improved handling of Windows, especially when used with large screen displays, and a new Extra Database type called **External Link**. To manage the new layouts, HLMSW has improved layout saving mechanisms that allow users to set the screens on different computers and screen resolutions. So if you set up your screen on one computer and then work on a different one, your original settings will be retained.

## HLMSW Orchestration Window

HLMSW has introduced three display modes for the orchestration window to allow for side-by-side display on computer with large screen displays:



 **Tabbed Display:** this is the original option for HLMSW where the Orchestration and Extra Database fields are displayed on different tabs

 **Vertical Display:** where the Orchestration and EDF window are displayed vertically

 **Horizontal Display:** where the Orchestration and EDF window are displayed horizontally

When displayed horizontally and vertically you can adjust the size of each window by clicking and dragging the slider located in the middle.

### BTM Innovation Pty Ltd

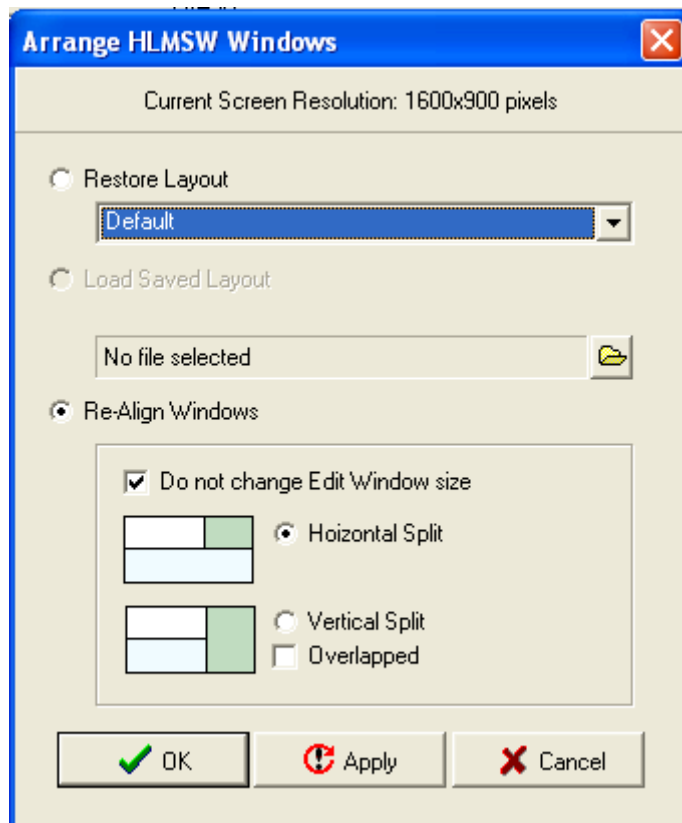
ACN 090 385 176 • ABN 71 090 385 176

**Please note NEW Address**

8 Finnis Street • North Adelaide • SOUTH AUSTRALIA • 5006  
PO Box 3054 • Melbourne Street • North Adelaide • SOUTH AUSTRALIA • 5006  
Tel/Fax +61 (0)8 8239 1737 • Mobile +61 (0) 409 286 400  
info@btmi.com.au • <http://www.btmi.com.au>

## Arrange Windows

The arrange windows dialog has been improved to allow you to select from a number of predefined screen layouts:



**Restore Layout** allows you to select from different saved screen layouts (see the section below). The DEFAULT layout is the one that is opened when you started HLMSW. **Note: You can only select layouts created for the same screen resolution.**

**Load Saved** allows you to open a layout file saved to a file (see the section below). Click on the Folder icon to select a HLMSW Layout file.

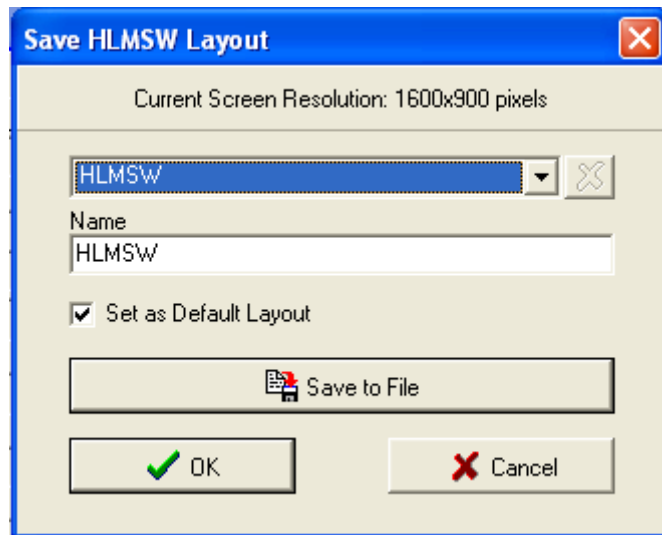
**Re-Align Windows** will reset the current display using the options below:

- *Do not change Edit Window Size* when checked will leave the Edit Window at the same width and height as it is now
- *Horizontal Split* makes the browse window the full width of the HLMSW window
- *Vertical Split* makes the orchestration window the full height of the HLMSW window
- *Overlapped* makes the browse window the full width of the HLMSW window

Any change to the windows made after selecting this option will be saved against the currently selected layout.

## Save HLMSW Layout

Once you have HLMSW looking the way you want, select the Save HLMSW Layout menu option to see this dialog:



You can use this dialog to save your existing layout as the current layout or to a different layout name.

Check the *Set as Default* option if you want this layout to be opened the next time you start HLMSW.

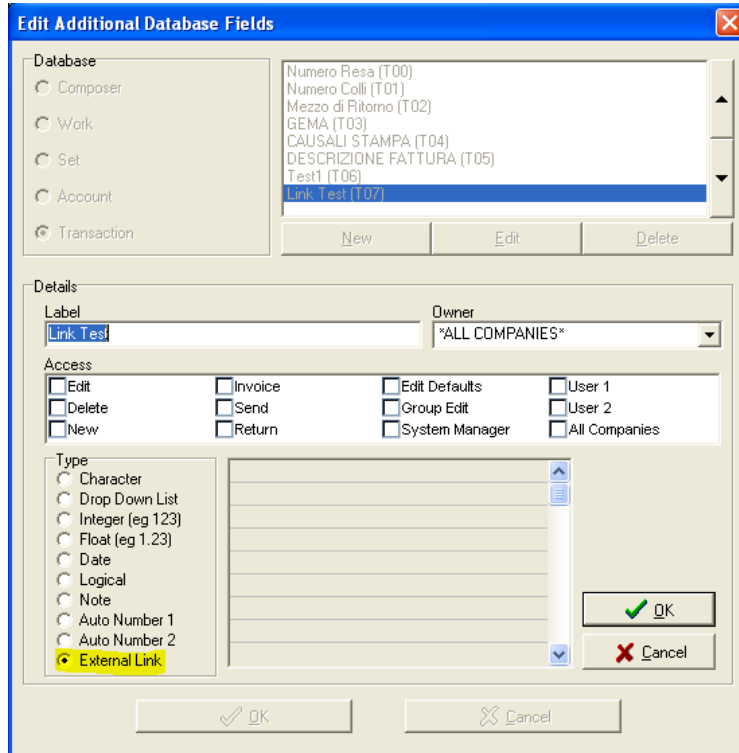
Use the *Save to File* button to save the layout to an external file that you can keep for later use or to share with your colleagues.

**Note:** Any changes to the layout you make from this point until you close the system will also be saved against the Layout and so if you want to keep a clean template of your layout do the following:

1. Make sure that HLMSW looks the way you want it to be.
2. Click on the Save HLMSW Layout menu option
3. Select (New) from the drop down list
4. Enter a new name eg : My HLMSW Layout
5. Do NOT check the *Set as Default Layout*
6. Click OK
7. Click on the Save HLMSW Layout menu option again
8. Select HLMSW from the drop down list
9. Check the *Set as Default Layout*
10. Click OK

## External Link Extra Database Field

A new type of Extra Database Field called External Link is available:



This option works just like a character field, but if you double-click the entry then HLMSW will try and run it.

Name	Value
Numero Resa	
Numero Colli	
Mezzo di Ritorno	
CAUSALI STAMPA	
DESCRIZIONE FATTURA	
Test1	
Link Test	<a href="http://www.btmi.com.au">www.btmi.com.au</a>

So if you enter a URL, it will open your browser, or an excel file then it will open Excel.

**Note: for file names you must make sure that the file name you enter is available to ALL HLMSW users.**

3 June 2010

Peter Grimshaw