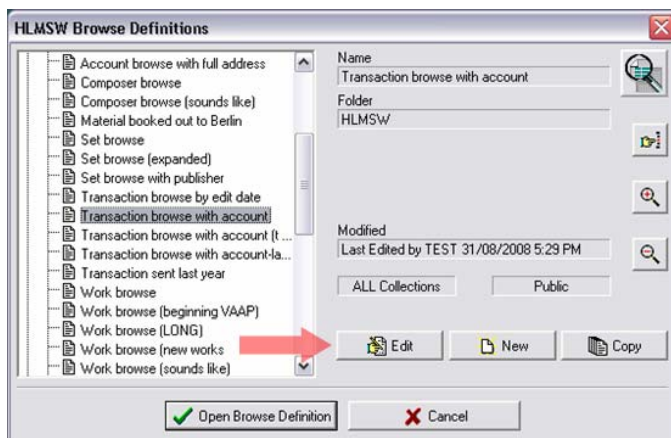
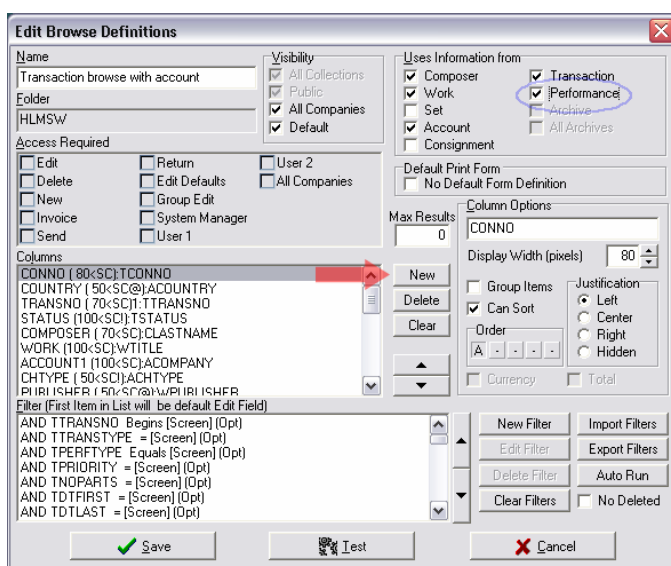


## Adding Performance Information (Date, Venue) to Browse Columns

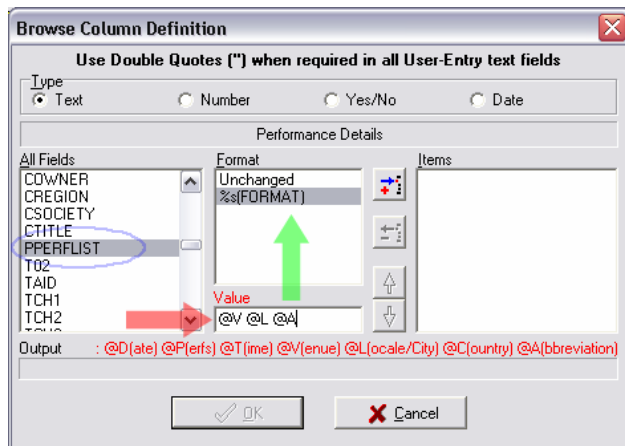
1. Select the Browse you want to include the column on and Select the EDIT button



2. Make sure the browse you have selected has a Check mark against the PERFORMANCE database in the "Uses Information from" box and then Select the NEW column button



3. Select PPERFLIST from the All Fields list, %s(FORMAT) from the Format and enter in the VALUE Column the text you would like to display where:  
 @D : Date (eg 01/01/2008)  
 @P : Number of performances (eg 1)  
 @T : Time/Type of Performance (eg 8.00pm)  
 @V : Venue (eg Albert Hall)  
 @L: Locale/City (eg London)  
 @C: Country (eg United Kingdom)  
 @A: 2 Digit ISO Country Abbreviation (eg GB)

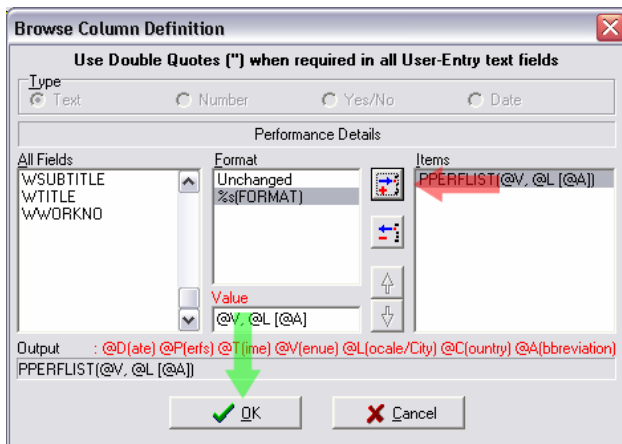


If nothing is entered into the Value column then HLMSW will use the default setting %D (%P) %V. %L [%A] which would look like:

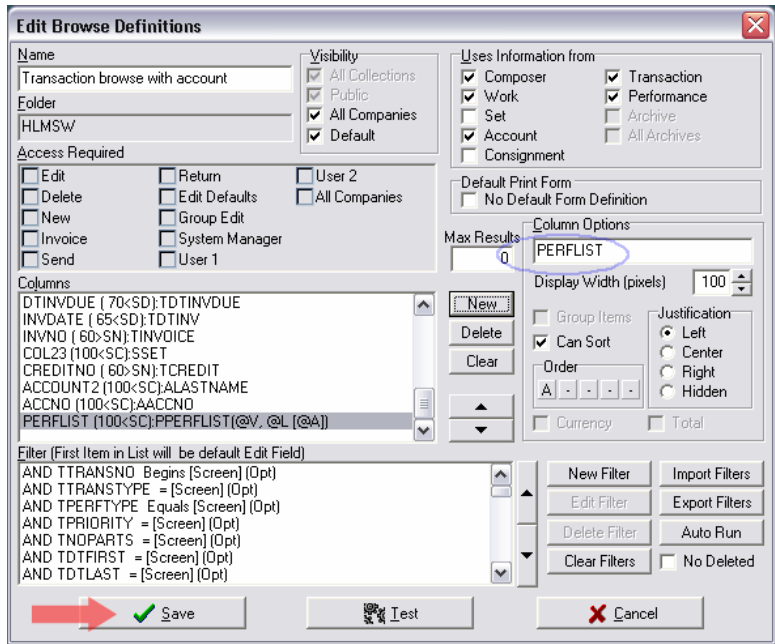
01/01/2008 (1) Albert Hall, London [UK]

Multiple performances are separated by a pipe (|) character;

4. Click on the Insert Button and then OK.



5. Set the Column Header, Column Width and Save the Changes to the Browse



The column will now display in the browse:

PERFLIST
[GB]
Tenerife [ES]
Oran Mor, Glasgow [GB]
The Blackledge Theatre, [GB]
Gedey Church, Lincolnshire [GB]Corn Exchange, King's L...
Aalborg [SE]
Aalborg [SE]
St John's, Smith Square, London [GB]
St John's, Smith Square, London [GB]
St Joseph's College, Ipswich [GB]
St Dunstons Church, Mayfield [GB]
Barbican Hall, London [GB]
National Concert Hall, Dublin [IE]
Algonquin Regional High School, Boylston, MA [US]
[GB]
Montrose Academy, [GB]
Bulgaria Hall, Sofia [BG]
Galashiels Volunteer Hall, [GB]

Peter Grimshaw  
August 31, 2008